

'Dimensions in Inches'

Belt Width	Assembly Part Number	4195-20°-Troughing Idler Dimensions 5" dia. Rolls					Assembly Weight
		A	E	G	H	K	
18"	405-18-A0-0200	27	11-1/16	6-13/16	19-7/8	8-11/16	45 lbs.
24"	405-24-A0-0200	33	11-3/4	8-15/16	25-15/16	8-11/16	52 lbs.
30"	405-30-A0-0200	39	12-1/2	11	31-15/16	8-11/16	58 lbs.
36"	405-36-A0-0200	45	13-3/16	13-1/8	38	8-11/16	64 lbs.
42"	405-42-A0-0200	51	13-7/8	15-3/16	43-7/8	8-11/16	71 lbs.
48"	405-48-A0-0200	57	14-5/8	17-1/4	49-15/16	8-11/16	77 lbs.
54"	405-54-A0-0200	63	15-9/16	19-5/16	55-13/16	9	89 lbs.
60"	405-60-A0-0200	69	16-3/8	21-7/16	61-7/8	9	95 lbs.

Belt Width	Assembly Part Number	4196-20°-Troughing Idler Dimensions 6" dia. Rolls					Assembly Weight
		A	E	G	H	K	
18"	406-18-A0-0200	27	11-1/2	6-13/16	19-9/16	9-3/16	55 lbs.
24"	406-24-A0-0200	33	12-1/4	8-15/16	25-9/16	9-3/16	63 lbs.
30"	406-30-A0-0200	39	12-15/16	11	31-5/8	9-3/16	71 lbs.
36"	406-36-A0-0200	45	13-11/16	13-1/8	37-5/8	9-3/16	79 lbs.
42"	406-42-A0-0200	51	14-3/8	15-3/16	43-9/16	9-3/16	88 lbs.
48"	406-48-A0-0200	57	15-1/16	17-1/4	49-5/8	9-3/16	96 lbs.
54"	406-54-A0-0200	63	16-1/8	19-5/16	55-9/16	9-1/2	110 lbs.
60"	406-60-A0-0200	69	16-13/16	21-7/16	61-9/16	9-1/2	118 lbs.

Belt Width	Assembly Part Number	4195-35°-Troughing Idler Dimensions 5" dia. Rolls					Assembly Weight
		A	E	G	H	K	
18"	405-18-B0-0200	27	12-11/16	6-13/16	18-3/8	8-11/16	48 lbs.
24"	405-24-B0-0200	33	13-7/8	8-15/16	23-7/8	8-11/16	55 lbs.
30"	405-30-B0-0200	39	15-1/16	11	29-3/8	8-11/16	62 lbs.
36"	405-36-B0-0200	45	16-1/4	13-1/8	34-15/16	8-11/16	68 lbs.
42"	405-42-B0-0200	51	17-7/16	15-3/16	40-5/16	8-11/16	75 lbs.
48"	405-48-B0-0200	57	18-5/8	17-1/4	45-7/8	8-11/16	82 lbs.
54"	405-54-B0-0200	63	20-1/8	19-5/16	51-5/16	9	94 lbs.
60"	405-60-B0-0200	69	21-3/8	21-7/16	56-7/8	9	100 lbs.

Belt Width	Assembly Part Number	4196-35°-Troughing Idler Dimensions 6" dia. Rolls					Assembly Weight
		A	E	G	H	K	
18"	406-18-B0-0200	27	13-1/16	6-13/16	17-3/4	9-3/16	57 lbs.
24"	406-24-B0-0200	33	14-5/16	8-15/16	23-5/16	9-3/16	66 lbs.
30"	406-30-B0-0200	39	15-1/2	11	28-13/16	9-3/16	74 lbs.
36"	406-36-B0-0200	45	16-11/16	13-1/8	34-3/8	9-3/16	83 lbs.
42"	406-42-B0-0200	51	17-7/8	15-3/16	39-3/4	9-3/16	92 lbs.
48"	406-48-B0-0200	57	19-1/16	17-1/4	45-5/16	9-3/16	100 lbs.
54"	406-54-B0-0200	63	20-9/16	19-5/16	50-3/4	9-1/2	115 lbs.
60"	406-60-B0-0200	69	21-3/4	21-7/16	56-1/4	9-1/2	123 lbs.

Belt Width	Assembly Part Number	4195-45°-Troughing Idler Dimensions 5" dia. Rolls					Assembly Weight
		A	E	G	H	K	
18"	405-18-C0-0200	27	13-5/8	6-13/16	16-7/8	8-11/16	49 lbs.
24"	405-24-C0-0200	33	15-1/16	8-15/16	21-15/16	8-11/16	56 lbs.
30"	405-30-C0-0200	39	16-9/16	11	27	8-11/16	63 lbs.
36"	405-36-C0-0200	45	18-1/16	13-1/8	32-11/16	8-11/16	70 lbs.
42"	405-42-C0-0200	51	19-1/2	15-3/16	37	8-11/16	76 lbs.
48"	405-48-C0-0200	57	21	17-1/4	42-1/16	8-11/16	83 lbs.
54"	405-54-C0-0200	63	22-3/4	19-5/16	47-1/16	9	96 lbs.
60"	405-60-C0-0200	69	23-7/8	21-7/16	51-1/8	9	103 lbs.

Belt Width	Assembly Part Number	4196-45°-Troughing Idler Dimensions 6" dia. Rolls					Assembly Weight
		A	E	G	H	K	
18"	406-18-C0-0200	27	13-15/16	6-13/16	16-3/16	9-3/16	58 lbs.
24"	406-24-C0-0200	33	15-7/16	8-15/16	21-1/4	9-3/16	67 lbs.
30"	406-30-C0-0200	39	16-15/16	11	26-1/4	9-3/16	76 lbs.
36"	406-36-C0-0200	45	18-3/8	13-1/8	31-5/16	9-3/16	85 lbs.
42"	406-42-C0-0200	51	19-7/8	15-3/16	36-5/16	9-3/16	93 lbs.
48"	406-48-C0-0200	57	21-7/16	17-1/4	41-3/8	9-3/16	102 lbs.
54"	406-54-C0-0200	63	23-1/8	19-5/16	46-3/8	9-1/2	117 lbs.
60"	406-60-C0-0200	69	24-9/16	21-7/16	51-3/8	9-1/2	127 lbs.

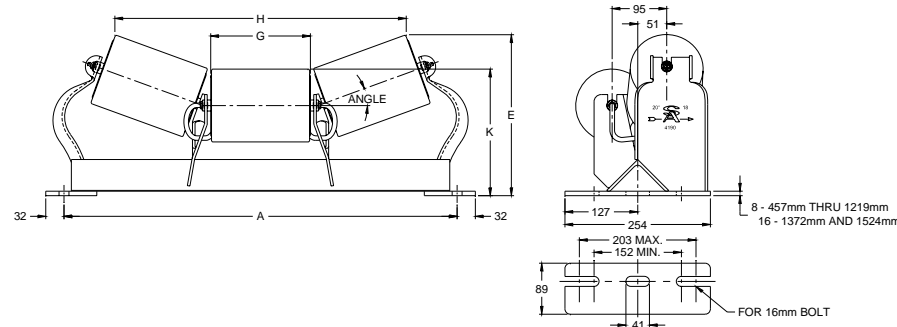


**STEPHENS-ADAMSON CONVEYOR COMPONENTS**  
www.Stephens-Adamson.com

CANADA  
Telephone: 1-800-510-3802  
Fax: 1-613-967-8128

U.S.A.  
Telephone: 1-800-638-6788  
Fax: 1-800-866-1438

INTERNATIONAL  
Telephone: 1-613-962-3411  
Fax: 1-613-967-8128



'Dimensions in Millimeters'

Belt Width	Assembly Part Number	4195-20°-Troughing Idler Dimensions 127 mm dia. Rolls					Assembly Weight
		A	E	G	H	K	
457 mm	405-18-A0-0200	686	281	173	505	221	20 kg.
610 mm	405-24-A0-0200	838	298	227	659	221	24 kg.
762 mm	405-30-A0-0200	991	318	279	811	221	26 kg.
914 mm	405-36-A0-0200	1143	335	333	965	221	29 kg.
1067 mm	405-42-A0-0200	1295	352	386	1114	221	32 kg.
1219 mm	405-48-A0-0200	1448	371	438	1268	221	35 kg.
1372 mm	405-54-A0-0200	1600	395	491	1418	229	40 kg.
1524 mm	405-60-A0-0200	1753	416	545	1572	229	43 kg.

Belt Width	Assembly Part Number	4195-35°-Troughing Idler Dimensions 127 mm dia. Rolls					Assembly Weight
		A	E	G	H	K	
457 mm	405-18-B0-0200	686	322	173	467	221	22 kg.
610 mm	405-24-B0-0200	838	352	227	606	221	25 kg.
762 mm	405-30-B0-0200	991	383	279	746	221	28 kg.
914 mm	405-36-B0-0200	1143	413	333	887	221	31 kg.
1067 mm	405-42-B0-0200	1295	443	386	1024	221	34 kg.
1219 mm	405-48-B0-0200	1448	473	438	1165	221	37 kg.
1372 mm	405-54-B0-0200	1600	511	491	1303	229	43 kg.
1524 mm	405-60-B0-0200	1753	543	545	1445	229	45 kg.

Belt Width	Assembly Part Number	4195-45°-Troughing Idler Dimensions 127 mm dia. Rolls					Assembly Weight
		A	E	G	H	K	
457 mm	405-18-C0-0200	686	346	173	429	221	22 kg.
610 mm	405-24-C0-0200	838	383	227	557	221	25 kg.
762 mm	405-30-C0-0200	991	421	279	686	221	29 kg.
914 mm	405-36-C0-0200	1143	459	333	814	221	32 kg.
1067 mm	405-42-C0-0200	1295	495	386	940	221	34 kg.
1219 mm	405-48-C0-0200	1448	533	438	1068	221	38 kg.
1372 mm	405-54-C0-0200	1600	578	491	1195	229	44 kg.
1524 mm	405-60-C0-0200	1753	606	545	1299	229	47 kg.

Belt Width	Assembly Part Number	4196-20°-Troughing Idler Dimensions 152 mm dia. Rolls					Assembly Weight
		A	E	G	H	K	
457 mm	406-18-A0-0200	686	292	173	497	233	25 kg.
610 mm	406-24-A0-0200	838	311	227	649	233	29 kg.
762 mm	406-30-A0-0200	991	329	279	803	233	32 kg.
914 mm	406-36-A0-0200	1143	348	333	956	233	36 kg.
1067 mm	406-42-A0-0200	1295	365	386	1106	233	40 kg.
1219 mm	406-48-A0-0200	1448	383	438	1260	233	44 kg.
1372 mm	406-54-A0-0200	1600	410	491	1411	241	50 kg.
1524 mm	406-60-A0-0200	1753	427	545	1564	241	54 kg.

Belt Width	Assembly Part Number	4196-35°-Troughing Idler Dimensions 152 mm dia. Rolls					Assembly Weight
		A	E	G	H	K	
457 mm	406-18-B0-0200	686	332	173	451	233	26 kg.
610 mm	406-24-B0-0200	838	364	227	592	233	30 kg.
762 mm	406-30-B0-0200	991	394	279	732	233	34 kg.
914 mm	406-36-B0-0200	1143	424	333	873	233	38 kg.
1067 mm	406-42-B0-0200	1295	454	386	1010	233	42 kg.
1219 mm	406-48-B0-0200	1448	484	438	1151	233	45 kg.
1372 mm	406-54-B0-0200	1600	522	491	1289	241	52 kg.
1524 mm	406-60-B0-0200	1753	552	545	1429	241	56 kg.

Belt Width	Assembly Part Number	4196-45°-Troughing Idler Dimensions 152 mm dia. Rolls					Assembly Weight
		A	E	G	H	K	
457 mm	406-18-C0-0200	686	354	173	411	233	26 kg.
610 mm	406-24-C0-0200	838	392	227	540	233	30 kg.
762 mm	406-30-C0-0200	991	430	279	667	233	34 kg.
914 mm	406-36-C0-0200	1143	467	333	795	233	39 kg.
1067 mm	406-42-C0-0200	1295	505	386	922	233	42 kg.
1219 mm	406-48-C0-0200	1448	545	438	1051	233	46 kg.
1372 mm	406-54-C0-0200	1600	587	491	1178	241	53 kg.
1524 mm	406-60-C0-0200	1753	624	545	1305	241	58 kg.



**STEPHENS-ADAMSON CONVEYOR COMPONENTS**  
www.Stephens-Adamson.com

CANADA  
Telephone: 1-800-510-3802  
Fax: 1-613-967-8128

U.S.A.  
Telephone: 1-800-638-6788  
Fax: 1-800-866-1438

INTERNATIONAL  
Telephone: 1-613-962-3411  
Fax: 1-613-967-8128