

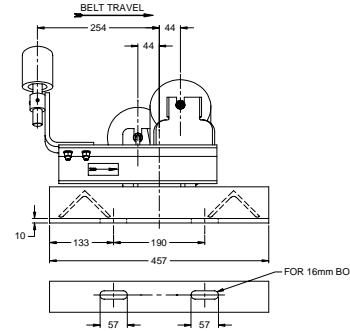
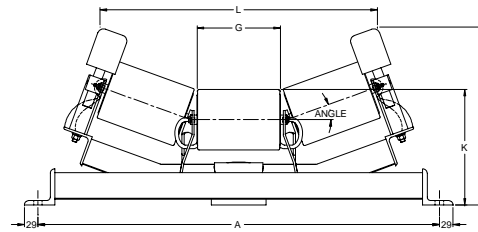




# STEPHENS-ADAMSON CONVEYING

Note: Dimensions for REFERENCE ONLY and are SUBJECT TO CHANGE WITHOUT NOTICE.  
Contact Stephens-Adamson Conveying for Certified Dimensions Prints.

## CEMA "C" 4190 Series ST-PA Offset Idlers - Regreasable



*'Dimensions in Millimeters'*

Belt Width	Assembly Part Number	4195-STPA- 20° Troughing Belt Training Idler Dimensions 127 mm dia. Rolls					Assembly Weight
		A	E	G	K	L	
457 mm	405-18-AT-0200	686	379	173	251	564	50 kg.
610 mm	405-24-AT-0200	838	397	227	251	718	56 kg.
762 mm	405-30-AT-0200	991	416	279	251	870	63 kg.
914 mm	405-36-AT-0200	1143	433	333	251	1022	68 kg.
1067 mm	405-42-AT-0200	1295	451	386	251	1175	73 kg.
1219 mm	405-48-AT-0200	1448	470	438	251	1327	88 kg.
1372 mm	405-54-AT-0200	1600	487	491	251	1478	93 kg.
1524 mm	405-60-AT-0200	1753	506	545	251	1632	99 kg.

Belt Width	Assembly Part Number	4196-STPA- 20° Troughing Belt Training Idler Dimensions 152 mm dia. Rolls					Assembly Weight
		A	E	G	K	L	
457 mm	406-18-AT-0200	686	379	173	264	564	55 kg.
610 mm	406-24-AT-0200	838	397	227	264	718	61 kg.
762 mm	406-30-AT-0200	991	416	279	264	870	68 kg.
914 mm	406-36-AT-0200	1143	433	333	264	1022	74 kg.
1067 mm	406-42-AT-0200	1295	451	386	264	1175	81 kg.
1219 mm	406-48-AT-0200	1448	470	438	264	1327	97 kg.
1372 mm	406-54-AT-0200	1600	487	491	264	1478	103 kg.
1524 mm	406-60-AT-0200	1753	506	545	264	1632	110 kg.

Belt Width	Assembly Part Number	4195-STPA- 35° Troughing Belt Training Idler Dimensions 127 mm dia. Rolls					Assembly Weight
		A	E	G	K	L	
457 mm	405-18-BT-0200	686	425	173	264	487	52 kg.
610 mm	405-24-BT-0200	838	456	227	264	627	57 kg.
762 mm	405-30-BT-0200	991	486	279	264	768	64 kg.
914 mm	405-36-BT-0200	1143	516	333	264	908	69 kg.
1067 mm	405-42-BT-0200	1295	546	386	264	1046	74 kg.
1219 mm	405-48-BT-0200	1448	578	438	264	1187	90 kg.
1372 mm	405-54-BT-0200	1600	608	491	264	1326	95 kg.
1524 mm	405-60-BT-0200	1753	638	545	264	1465	106 kg.

Belt Width	Assembly Part Number	4196-STPA- 35° Troughing Belt Training Idler Dimensions 152 mm dia. Rolls					Assembly Weight
		A	E	G	K	L	
457 mm	406-18-BT-0200	686	425	173	264	487	56 kg.
610 mm	406-24-BT-0200	838	456	227	264	627	62 kg.
762 mm	406-30-BT-0200	991	486	279	264	768	69 kg.
914 mm	406-36-BT-0200	1143	516	333	264	908	76 kg.
1067 mm	406-42-BT-0200	1295	546	386	264	1046	82 kg.
1219 mm	406-48-BT-0200	1448	578	438	264	1187	98 kg.
1372 mm	406-54-BT-0200	1600	608	491	264	1326	105 kg.
1524 mm	406-60-BT-0200	1753	638	545	264	1465	111 kg.

Belt Width	Assembly Part Number	4195-STPA- 45° Troughing Belt Training Idler Dimensions 127 mm dia. Rolls					Assembly Weight
		A	E	G	K	L	
457 mm	405-18-CT-0200	686	449	173	251	424	52 kg.
610 mm	405-24-CT-0200	838	487	227	251	552	58 kg.
762 mm	405-30-CT-0200	991	525	279	251	679	64 kg.
914 mm	405-36-CT-0200	1143	562	333	251	810	70 kg.
1067 mm	405-42-CT-0200	1295	598	386	251	935	75 kg.
1219 mm	405-48-CT-0200	1448	637	438	251	1064	91 kg.
1372 mm	405-54-CT-0200	1600	673	491	251	1191	96 kg.
1524 mm	405-60-CT-0200	1753	711	545	251	1319	102 kg.

Belt Width	Assembly Part Number	4196-STPA- 45° Troughing Belt Training Idler Dimensions 152 mm dia. Rolls					Assembly Weight
		A	E	G	K	L	
457 mm	406-18-CT-0200	686	449	173	264	424	57 kg.
610 mm	406-24-CT-0200	838	487	227	264	552	63 kg.
762 mm	406-30-CT-0200	991	525	279	264	679	70 kg.
914 mm	406-36-CT-0200	1143	562	333	264	810	77 kg.
1067 mm	406-42-CT-0200	1295	598	386	264	935	83 kg.
1219 mm	406-48-CT-0200	1448	637	438	264	1064	100 kg.
1372 mm	406-54-CT-0200	1600	673	491	264	1191	106 kg.
1524 mm	406-60-CT-0200	1753	711	545	264	1319	117 kg.

### STEPHENS-ADAMSON CONVEYING

www.Stephens-Adamson.com

CANADA  
Telephone: 1-800-510-3802  
Fax: 1-613-967-8128

U.S.A.  
Telephone: 1-800-638-6788  
Fax: 1-800-866-1438

INTERNATIONAL  
Telephone: 1-613-962-3411  
Fax: 1-613-967-8128

DS-E-IDL-00-063