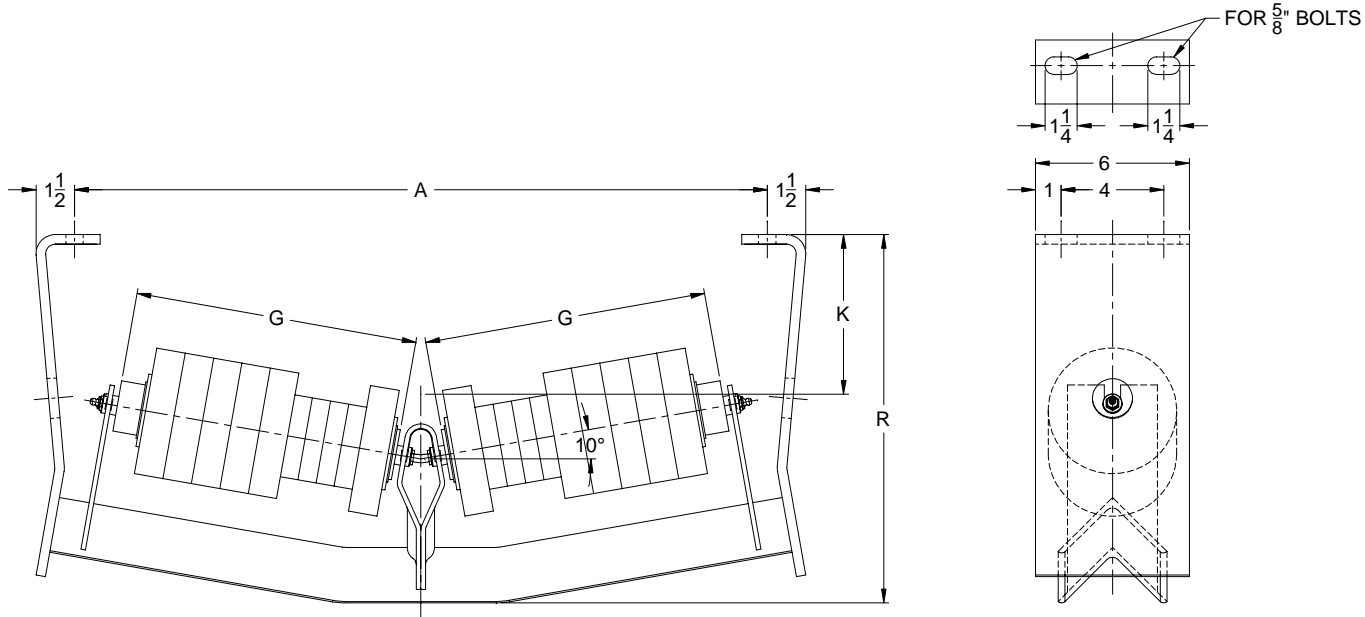




STEPHENS-ADAMSON CONVEYING

Note: Dimensions for REFERENCE ONLY and are SUBJECT TO CHANGE WITHOUT NOTICE.
Contact Stephens-Adamson Conveying for Certified Dimensions Prints.

CEMA "C" 4190 Series Rubber Disc V Return Idlers - Regreasable



'Dimensions in Inches'

Belt Width	Part Number	R710-4195-10°- V Return Idler Dimensions 5" dia. Rolls				Weight
		A	G	K	R	
18"	405-18-G8-0200	27	12-7/16	6-1/4	14-17/32	71 lbs.
24"	405-24-G8-0200	33	15-7/16	6-3/4	15-1/32	78 lbs.
30"	405-30-G8-0200	39	18-7/16	7-1/2	15-25/32	84 lbs.
36"	405-36-G8-0200	45	21-7/16	7-7/8	16-5/32	91 lbs.
42"	405-42-G8-0200	51	24-7/16	8-1/2	16-25/32	96 lbs.
48"	405-48-G8-0200	57	27-7/16	9	17-5/8	102 lbs.
54"	405-54-G8-0200	63	30-7/16	9-5/8	18-1/4	109 lbs.
60"	405-60-G8-0200	69	33-7/16	10-1/8	19-1/8	112 lbs.

Belt Width	Part Number	R710-4196-10°- V Return Idler Dimensions 6-1/4" dia. Rolls				Weight
		A	G	K	R	
18"	406-18-G8-0200	27	12-7/16	5-3/4	14-17/32	72 lbs.
24"	406-24-G8-0200	33	15-7/16	6-1/4	15-1/32	79 lbs.
30"	406-30-G8-0200	39	18-7/16	7	15-25/32	88 lbs.
36"	406-36-G8-0200	45	21-7/16	7-3/8	16-5/32	93 lbs.
42"	406-42-G8-0200	51	24-7/16	8	16-25/32	98 lbs.
48"	406-48-G8-0200	57	27-7/16	8-1/2	17-5/8	105 lbs.
54"	406-54-G8-0200	63	30-7/16	9-1/8	18-1/4	112 lbs.
60"	406-60-G8-0200	69	33-7/16	9-5/8	19-1/8	114 lbs.

STEPHENS-ADAMSON CONVEYING

www.Stephens-Adamson.com

CANADA
Telephone: 1-800-510-3802
Fax: 1-613-967-8128

U.S.A.
Telephone: 1-800-638-6788
Fax: 1-800-866-1438

INTERNATIONAL
Telephone: 1-613-962-3411
Fax: 1-613-967-8128

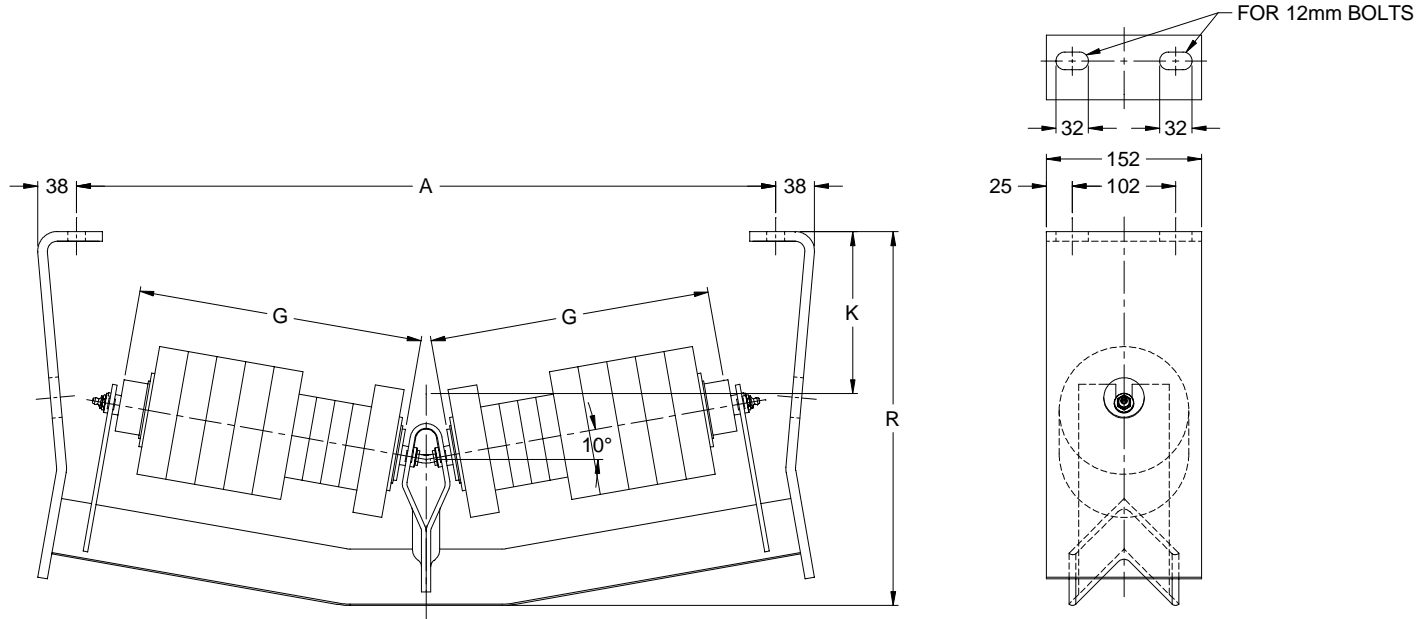
DS-E-IDL-00-071



STEPHENS-ADAMSON CONVEYING

Note: Dimensions for REFERENCE ONLY and are SUBJECT TO CHANGE WITHOUT NOTICE.
Contact Stephens-Adamson Conveying for Certified Dimensions Prints.

CEMA "C" 4190 Series Rubber Disc V Return Idlers - Regreasable



'Dimensions in Millimeters'

Belt Width	Part Number	R710-4195-10°- V Return Idler Dimensions 127 mm dia. Rolls				Weight
		A	G	K	R	
457 mm	405-18-G8-0200	686	316	159	369	32 kg.
610 mm	405-24-G8-0200	838	392	171	382	35 kg.
762 mm	405-30-G8-0200	991	468	191	401	38 kg.
914 mm	405-36-G8-0200	1143	545	200	410	41 kg.
1067 mm	405-42-G8-0200	1295	621	216	426	44 kg.
1219 mm	405-48-G8-0200	1448	697	229	448	46 kg.
1372 mm	405-54-G8-0200	1600	773	244	464	49 kg.
1524 mm	405-60-G8-0200	1753	849	257	486	51 kg.

Belt Width	Part Number	R710-4196-10°- V Return Idler Dimensions 159 mm dia. Rolls				Weight
		A	G	K	R	
457 mm	406-18-G8-0200	686	316	146	369	33 kg.
610 mm	406-24-G8-0200	838	392	159	382	36 kg.
762 mm	406-30-G8-0200	991	468	178	401	40 kg.
914 mm	406-36-G8-0200	1143	545	187	410	42 kg.
1067 mm	406-42-G8-0200	1295	621	203	426	44 kg.
1219 mm	406-48-G8-0200	1448	697	216	448	48 kg.
1372 mm	406-54-G8-0200	1600	773	232	464	51 kg.
1524 mm	406-60-G8-0200	1753	849	244	486	52 kg.

STEPHENS-ADAMSON CONVEYING

www.Stephens-Adamson.com

CANADA

Telephone: 1-800-510-3802
Fax: 1-613-967-8128

U.S.A.

Telephone: 1-800-638-6788
Fax: 1-800-866-1438

INTERNATIONAL

Telephone: 1-613-962-3411
Fax: 1-613-967-8128

DS-E-IDL-00-071