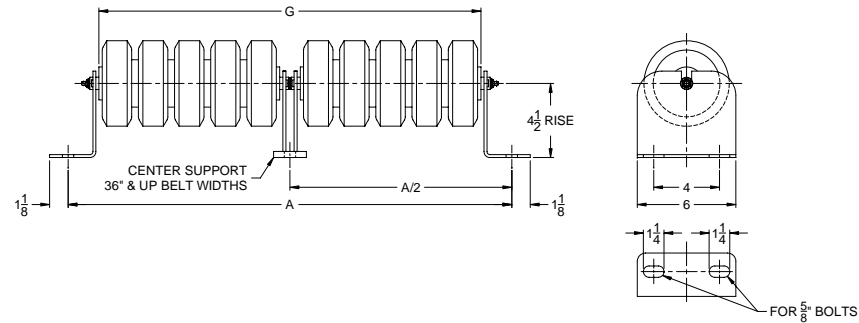


| R711-4195- 4-1/2" Impact Flat Belt Idler<br>Dimensions 5-3/16" dia. Rolls |                             |    |        |         |
|---|-----------------------------|----|--------|---------|
| Belt Width  | Roller Assembly Part Number | A  | G      | Weight  |
| 18"   | M-18480-037-08              | 27 | 23-1/4 | 27 lbs. |
| 24"   | M-18480-037-02              | 33 | 29-1/4 | 31 lbs. |
| 30"   | M-18480-037-05              | 39 | 35-1/4 | 36 lbs. |

4-1/2" Rise Bracket Part Number  
MD-IDL42-01-01

Note: Brackets are priced and sold separately for single roller flat belt idlers, two brackets are required per roller.

| R711-4196- 4-1/2" Impact Flat Belt Idler<br>Dimensions 6-3/16" dia. Rolls |                             |    |        |         |
|---|-----------------------------|----|--------|---------|
| Belt Width  | Roller Assembly Part Number | A  | G      | Weight  |
| 18"   | M-18480-060-10              | 27 | 23-1/4 | 32 lbs. |
| 24"   | M-18480-060-09              | 33 | 29-1/4 | 37 lbs. |
| 30"   | M-18480-060-08              | 39 | 35-1/4 | 43 lbs. |



| R711-4195- 4-1/2" Impact Flat Belt Idler<br>Dimensions 5-3/16" dia. Rolls |                            |    |        |         |
|---|----------------------------|----|--------|---------|
| Belt Width  | Idler Assembly Part Number | A  | G      | Weight  |
| 36"   | M-18477-655-03             | 45 | 41-1/4 | 47 lbs. |
| 42"   | M-18477-655-04             | 51 | 47-1/4 | 51 lbs. |
| 48"   | M-18477-655-05             | 57 | 53-1/4 | 59 lbs. |
| 54"   | M-18477-655-06             | 63 | 59-1/4 | 64 lbs. |
| 60"   | M-18477-655-07             | 69 | 65-1/4 | 69 lbs. |

| R711-4196- 4-1/2" Impact Flat Belt Idler<br>Dimensions 6-3/16" dia. Rolls |                            |    |        |         |
|---|----------------------------|----|--------|---------|
| Belt Width  | Idler Assembly Part Number | A  | G      | Weight  |
| 36"   | M-18477-629-03             | 45 | 41-1/4 | 56 lbs. |
| 42"   | M-18477-629-04             | 51 | 47-1/4 | 61 lbs. |
| 48"   | M-18477-629-05             | 57 | 53-1/4 | 70 lbs. |
| 54"   | M-18477-629-06             | 63 | 59-1/4 | 76 lbs. |
| 60"   | M-18477-629-07             | 69 | 65-1/4 | 82 lbs. |

Note: Brackets are included for 2 roller flat belt idlers

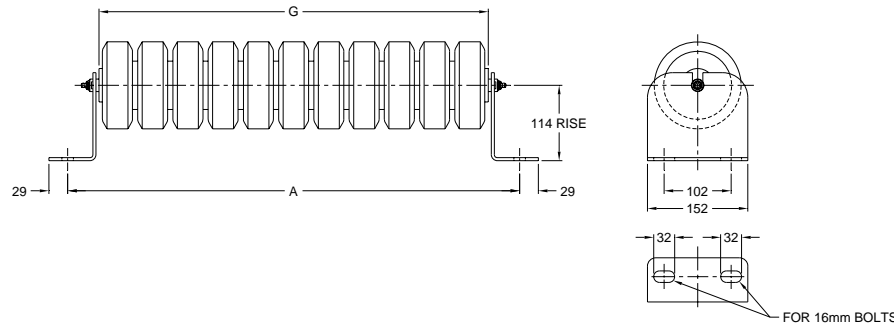


**STEPHENS-ADAMSON CONVEYOR COMPONENTS**  
www.Stephens-Adamson.com

CANADA  
Telephone: 1-800-510-3802  
Fax: 1-613-967-8128

U.S.A.  
Telephone: 1-800-638-6788  
Fax: 1-800-866-1438

INTERNATIONAL  
Telephone: 1-613-962-3411  
Fax: 1-613-967-8128

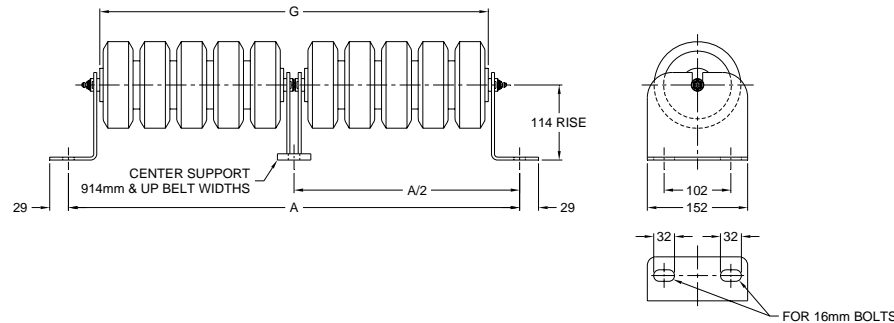


| R711-4195- 114 mm Impact Flat Belt Idler<br>Dimensions 132 mm dia. Rolls |                             |     |     |        |
|--|-----------------------------|-----|-----|--------|
| Belt Width   | Roller Assembly Part Number | A   | G   | Weight |
| 457 mm   | M-18480-037-08              | 686 | 591 | 12 kg. |
| 610 mm   | M-18480-037-02              | 838 | 743 | 14 kg. |
| 762 mm   | M-18480-037-05              | 991 | 895 | 16 kg. |

114 mm Rise Bracket Part Number  
MD-IDL42-01-01

Note: Brackets are priced and sold separately for single roller flat belt idlers, two brackets are required per roller.

| R711-4196- 114 mm Impact Flat Belt Idler<br>Dimensions 157 mm dia. Rolls |                             |     |     |        |
|--|-----------------------------|-----|-----|--------|
| Belt Width   | Roller Assembly Part Number | A   | G   | Weight |
| 457 mm   | M-18480-060-10              | 686 | 591 | 15 kg. |
| 610 mm   | M-18480-060-09              | 838 | 743 | 17 kg. |
| 762 mm   | M-18480-060-08              | 991 | 895 | 20 kg. |



| R711-4195- 114 mm Impact Flat Belt Idler<br>Dimensions 132 mm dia. Rolls |                            |      |      |        |
|--|----------------------------|------|------|--------|
| Belt Width   | Idler Assembly Part Number | A    | G    | Weight |
| 914 mm   | M-18477-655-03             | 1143 | 1048 | 21 kg. |
| 1067 mm  | M-18477-655-04             | 1295 | 1200 | 23 kg. |
| 1219 mm  | M-18477-655-05             | 1448 | 1353 | 27 kg. |
| 1372 mm  | M-18477-655-06             | 1600 | 1505 | 29 kg. |
| 1524 mm  | M-18477-655-07             | 1753 | 1657 | 31 kg. |

| R711-4196- 114 mm Impact Flat Belt Idler<br>Dimensions 157 mm dia. Rolls |                            |      |      |        |
|--|----------------------------|------|------|--------|
| Belt Width   | Idler Assembly Part Number | A    | G    | Weight |
| 914 mm   | M-18477-629-03             | 1143 | 1048 | 25 kg. |
| 1067 mm  | M-18477-629-04             | 1295 | 1200 | 28 kg. |
| 1219 mm  | M-18477-629-05             | 1448 | 1353 | 32 kg. |
| 1372 mm  | M-18477-629-06             | 1600 | 1505 | 34 kg. |
| 1524 mm  | M-18477-629-07             | 1753 | 1657 | 37 kg. |

Note: Brackets are included for 2 roller flat belt idlers



**STEPHENS-ADAMSON CONVEYOR COMPONENTS**  
www.Stephens-Adamson.com

CANADA  
Telephone: 1-800-510-3802  
Fax: 1-613-967-8128

U.S.A.  
Telephone: 1-800-638-6788  
Fax: 1-800-866-1438

INTERNATIONAL  
Telephone: 1-613-962-3411  
Fax: 1-613-967-8128