

*'Dimensions in Inches'*

Belt Width	Assembly Part Number	4395-20°-Troughing Idler Dimensions 5" dia. Rolls					Assembly Weight
		A	E	G	H	K	
18"	435-18-A0-0120	27	11-1/16	6-13/16	19-7/8	8-11/16	45 lbs.
24"	435-24-A0-0120	33	11-3/4	8-15/16	25-15/16	8-11/16	52 lbs.
30"	435-30-A0-0120	39	12-1/2	11	31-15/16	8-11/16	58 lbs.
36"	435-36-A0-0120	45	13-3/16	13-1/8	38	8-11/16	64 lbs.
42"	435-42-A0-0120	51	13-7/8	15-3/16	43-7/8	8-11/16	71 lbs.
48"	435-48-A0-0120	57	14-5/8	17-1/4	49-15/16	8-11/16	77 lbs.

Belt Width	Assembly Part Number	4396-20°-Troughing Idler Dimensions 6" dia. Rolls					Assembly Weight
		A	E	G	H	K	
18"	436-18-A0-0120	27	11-1/2	6-13/16	19-9/16	9-3/16	55 lbs.
24"	436-24-A0-0120	33	12-1/4	8-15/16	25-9/16	9-3/16	63 lbs.
30"	436-30-A0-0120	39	12-15/16	11	31-5/8	9-3/16	71 lbs.
36"	436-36-A0-0120	45	13-11/16	13-1/8	37-5/8	9-3/16	79 lbs.
42"	436-42-A0-0120	51	14-3/8	15-3/16	43-9/16	9-3/16	88 lbs.
48"	436-48-A0-0120	57	15-1/16	17-1/4	49-5/8	9-3/16	96 lbs.

Belt Width	Assembly Part Number	4395-35°-Troughing Idler Dimensions 5" dia. Rolls					Assembly Weight
		A	E	G	H	K	
18"	435-18-B0-0120	27	12-11/16	6-13/16	18-3/8	8-11/16	48 lbs.
24"	435-24-B0-0120	33	13-7/8	8-15/16	23-7/8	8-11/16	55 lbs.
30"	435-30-B0-0120	39	15-1/16	11	29-3/8	8-11/16	62 lbs.
36"	435-36-B0-0120	45	16-1/4	13-1/8	34-15/16	8-11/16	68 lbs.
42"	435-42-B0-0120	51	17-7/16	15-3/16	40-5/16	8-11/16	75 lbs.
48"	435-48-B0-0120	57	18-5/8	17-1/4	45-7/8	8-11/16	82 lbs.

Belt Width	Assembly Part Number	4396-35°-Troughing Idler Dimensions 6" dia. Rolls					Assembly Weight
		A	E	G	H	K	
18"	436-18-B0-0120	27	13-1/16	6-13/16	17-3/4	9-3/16	57 lbs.
24"	436-24-B0-0120	33	14-5/16	8-15/16	23-5/16	9-3/16	66 lbs.
30"	436-30-B0-0120	39	15-1/2	11	28-13/16	9-3/16	74 lbs.
36"	436-36-B0-0120	45	16-11/16	13-1/8	34-3/8	9-3/16	83 lbs.
42"	436-42-B0-0120	51	17-7/8	15-3/16	39-3/4	9-3/16	92 lbs.
48"	436-48-B0-0120	57	19-1/16	17-1/4	45-5/16	9-3/16	100 lbs.

Belt Width	Assembly Part Number	4395-45°-Troughing Idler Dimensions 5" dia. Rolls					Assembly Weight
		A	E	G	H	K	
18"	435-18-C0-0120	27	13-5/8	6-13/16	16-7/8	8-11/16	49 lbs.
24"	435-24-C0-0120	33	15-1/16	8-15/16	21-15/16	8-11/16	56 lbs.
30"	435-30-C0-0120	39	16-9/16	11	27	8-11/16	63 lbs.
36"	435-36-C0-0120	45	18-1/16	13-1/8	32-1/16	8-11/16	70 lbs.
42"	435-42-C0-0120	51	19-1/2	15-3/16	37	8-11/16	76 lbs.
48"	435-48-C0-0120	57	21	17-1/4	42-1/16	8-11/16	83 lbs.

Belt Width	Assembly Part Number	4396-45°-Troughing Idler Dimensions 6" dia. Rolls					Assembly Weight
		A	E	G	H	K	
18"	436-18-C0-0120	27	13-15/16	6-13/16	16-3/16	9-3/16	58 lbs.
24"	436-24-C0-0120	33	15-7/16	8-15/16	21-1/4	9-3/16	67 lbs.
30"	436-30-C0-0120	39	16-15/16	11	26-1/4	9-3/16	76 lbs.
36"	436-36-C0-0120	45	18-3/8	13-1/8	31-5/16	9-3/16	85 lbs.
42"	436-42-C0-0120	51	19-7/8	15-3/16	36-5/16	9-3/16	93 lbs.
48"	436-48-C0-0120	57	21-7/16	17-1/4	41-3/8	9-3/16	102 lbs.



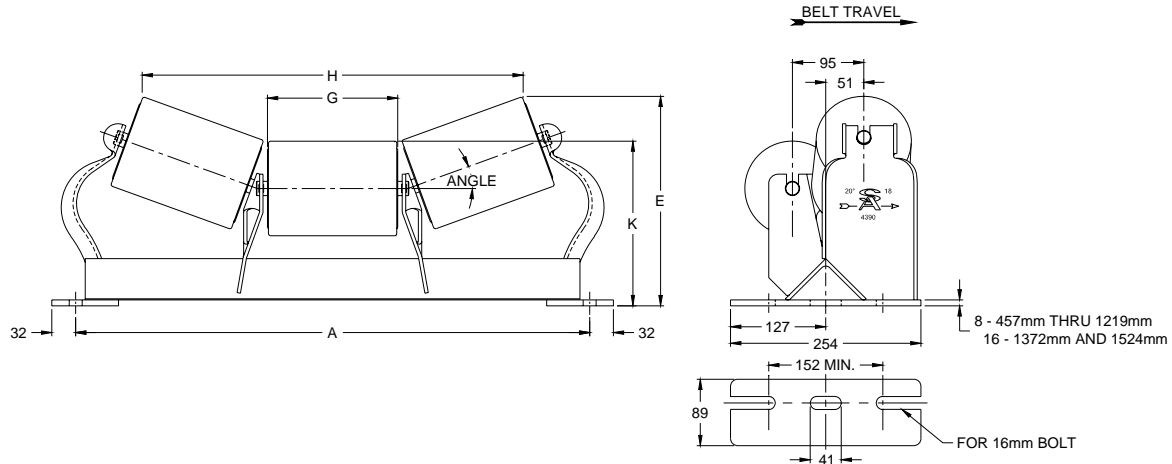
**STEPHENS-ADAMSON CONVEYOR COMPONENTS**  
www.Stephens-Adamson.com

CANADA  
Telephone: 1-800-510-3802  
Fax: 1-613-967-8128

U.S.A.  
Telephone: 1-800-638-6788  
Fax: 1-800-866-1438

INTERNATIONAL  
Telephone: 1-613-962-3411  
Fax: 1-613-967-8128

DS-E-IDL-00-081



'Dimensions in Millimeters'

Belt Width	Assembly Part Number	4395-20°-Troughing Idler Dimensions 127 mm dia. Rolls					Assembly Weight
		A	E	G	H	K	
457 mm	435-18-A0-0120	686	281	173	505	221	20 kg.
610 mm	435-24-A0-0120	838	298	227	659	221	24 kg.
762 mm	435-30-A0-0120	991	318	279	811	221	26 kg.
914 mm	435-36-A0-0120	1143	335	333	965	221	29 kg.
1067 mm	435-42-A0-0120	1295	352	386	1114	221	32 kg.
1219 mm	435-48-A0-0120	1448	371	438	1268	221	35 kg.

Belt Width	Assembly Part Number	4395-35°-Troughing Idler Dimensions 127 mm dia. Rolls					Assembly Weight
		A	E	G	H	K	
457 mm	435-18-B0-0120	686	322	173	467	221	22 kg.
610 mm	435-24-B0-0120	838	352	227	606	221	25 kg.
762 mm	435-30-B0-0120	991	383	279	746	221	28 kg.
914 mm	435-36-B0-0120	1143	413	333	887	221	31 kg.
1067 mm	435-42-B0-0120	1295	443	386	1024	221	34 kg.
1219 mm	435-48-B0-0120	1448	473	438	1165	221	37 kg.

Belt Width	Assembly Part Number	4395-45°-Troughing Idler Dimensions 127 mm dia. Rolls					Assembly Weight
		A	E	G	H	K	
457 mm	435-18-C0-0120	686	346	173	429	221	22 kg.
610 mm	435-24-C0-0120	838	383	227	557	221	25 kg.
762 mm	435-30-C0-0120	991	421	279	686	221	29 kg.
914 mm	435-36-C0-0120	1143	459	333	814	221	32 kg.
1067 mm	435-42-C0-0120	1295	495	386	940	221	34 kg.
1219 mm	435-48-C0-0120	1448	533	438	1068	221	38 kg.

Belt Width	Assembly Part Number	4396-20°-Troughing Idler Dimensions 152 mm dia. Rolls					Assembly Weight
		A	E	G	H	K	
457 mm	436-18-A0-0120	686	292	173	497	233	25 kg.
610 mm	436-24-A0-0120	838	311	227	649	233	29 kg.
762 mm	436-30-A0-0120	991	329	279	803	233	32 kg.
914 mm	436-36-A0-0120	1143	348	333	956	233	36 kg.
1067 mm	436-42-A0-0120	1295	365	386	1106	233	40 kg.
1219 mm	436-48-A0-0120	1448	383	438	1260	233	44 kg.

Belt Width	Assembly Part Number	4396-35°-Troughing Idler Dimensions 152 mm dia. Rolls					Assembly Weight
		A	E	G	H	K	
457 mm	436-18-B0-0120	686	332	173	451	233	26 kg.
610 mm	436-24-B0-0120	838	364	227	592	233	30 kg.
762 mm	436-30-B0-0120	991	394	279	732	233	34 kg.
914 mm	436-36-B0-0120	1143	424	333	873	233	38 kg.
1067 mm	436-42-B0-0120	1295	454	386	1010	233	42 kg.
1219 mm	436-48-B0-0120	1448	484	438	1151	233	45 kg.

Belt Width	Assembly Part Number	4396-45°-Troughing Idler Dimensions 152 mm dia. Rolls					Assembly Weight
		A	E	G	H	K	
457 mm	436-18-C0-0120	686	354	173	411	233	26 kg.
610 mm	436-24-C0-0120	838	392	227	540	233	30 kg.
762 mm	436-30-C0-0120	991	430	279	667	233	34 kg.
914 mm	436-36-C0-0120	1143	467	333	795	233	39 kg.
1067 mm	436-42-C0-0120	1295	505	386	922	233	42 kg.
1219 mm	436-48-C0-0120	1448	545	438	1051	233	46 kg.



**STEPHENS-ADAMSON CONVEYOR COMPONENTS**

www.Stephens-Adamson.com

CANADA  
Telephone: 1-800-510-3802  
Fax: 1-613-967-8128

U.S.A.  
Telephone: 1-800-638-6788  
Fax: 1-800-866-1438

INTERNATIONAL  
Telephone: 1-613-962-3411  
Fax: 1-613-967-8128

DS-E-IDL-00-081