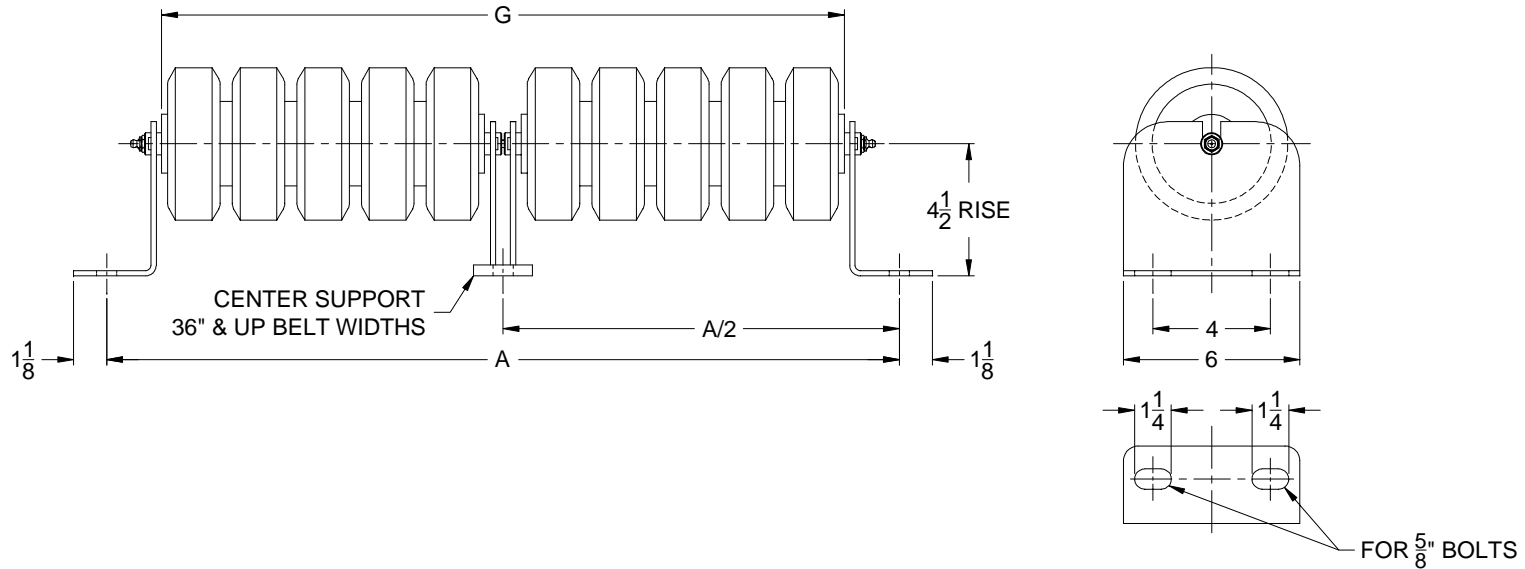




# STEPHENS-ADAMSON CONVEYING

Note: Dimensions for REFERENCE ONLY and are SUBJECT TO CHANGE WITHOUT NOTICE.  
Contact Stephens-Adamson Conveying for Certified Dimensions Prints.

## CEMA "D" 5190 Series 4-1/2" Rise Impact Flat Belt Idlers - Regreasable



*'Dimensions in Inches'*

R711-5195- 4-1/2" Impact Flat Belt Idler Dimensions 5-3/16" dia. Rolls				
Belt Width	Idler Assembly Part Number	A	G	Weight
24"	M-18477-624-01	33	29-1/4	38 lbs.
30"	M-18477-624-02	39	35-1/4	44 lbs.
36"	M-18477-624-03	45	41-1/4	50 lbs.
42"	M-18477-624-04	51	47-1/4	56 lbs.
48"	M-18477-624-05	57	53-1/4	61 lbs.
54"	M-18477-624-06	63	59-1/4	66 lbs.
60"	M-18477-624-07	69	65-1/4	72 lbs.
72"	M-18477-624-08	81	77-1/4	83 lbs.

R711-5196- 4-1/2" Impact Flat Belt Idler Dimensions 6-3/16" dia. Rolls				
Belt Width	Idler Assembly Part Number	A	G	Weight
24"	M-18477-531-01	33	29-1/4	47 lbs.
30"	M-18477-531-02	39	35-1/4	53 lbs.
36"	M-18477-531-03	45	41-1/4	59 lbs.
42"	M-18477-531-04	51	47-1/4	66 lbs.
48"	M-18477-531-05	57	53-1/4	72 lbs.
54"	M-18477-531-06	63	59-1/4	78 lbs.
60"	M-18477-531-07	69	65-1/4	85 lbs.
72"	M-18477-531-08	81	77-1/4	98 lbs.

Note: Brackets are included for 2 roller flat belt idlers

### STEPHENS-ADAMSON CONVEYING

www.Stephens-Adamson.com

CANADA  
Telephone: 1-800-510-3802  
Fax: 1-613-967-8128

U.S.A.  
Telephone: 1-800-638-6788  
Fax: 1-800-866-1438

INTERNATIONAL  
Telephone: 1-613-962-3411  
Fax: 1-613-967-8128

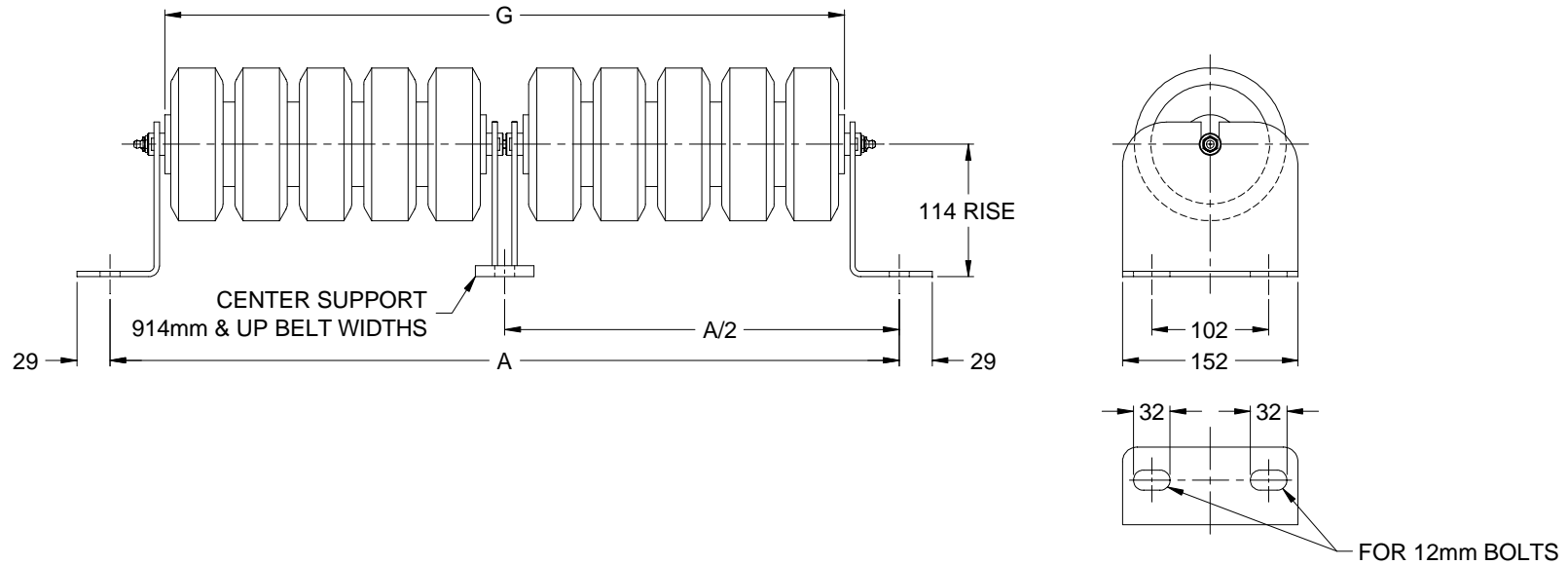
DS-E-IDL-00-115 A



# STEPHENS-ADAMSON CONVEYING

Note: Dimensions for REFERENCE ONLY and are SUBJECT TO CHANGE WITHOUT NOTICE.  
Contact Stephens-Adamson Conveying for Certified Dimensions Prints.

## CEMA "D" 5190 Series 114 mm Rise Impact Flat Belt Idlers - Regreasable



'Dimensions in Millimeters'

R711-5195- 114 mm Impact Flat Belt Idler Dimensions 132 mm dia. Rolls				
Belt Width	Idler Assembly Part Number	A	G	Weight
610 mm	M-18477-624-01	838	743	17 kg.
762 mm	M-18477-624-02	991	895	20 kg.
914 mm	M-18477-624-03	1143	1048	23 kg.
1067 mm	M-18477-624-04	1295	1200	25 kg.
1219 mm	M-18477-624-05	1448	1353	28 kg.
1372 mm	M-18477-624-06	1600	1505	30 kg.
1524 mm	M-18477-624-07	1753	1657	33 kg.
1829 mm	M-18477-624-08	2057	1962	38 kg.

R711-5196- 114 mm Impact Flat Belt Idler Dimensions 157 mm dia. Rolls				
Belt Width	Idler Assembly Part Number	A	G	Weight
610 mm	M-18477-531-01	838	743	21 kg
762 mm	M-18477-531-02	991	895	24 kg.
914 mm	M-18477-531-03	1143	1048	27 kg.
1067 mm	M-18477-531-04	1295	1200	30 kg.
1219 mm	M-18477-531-05	1448	1353	33 kg.
1372 mm	M-18477-531-06	1600	1505	35 kg.
1524 mm	M-18477-531-07	1753	1657	39 kg.
1829 mm	M-18477-531-08	2057	1962	44 kg.

Note: Brackets are included for 2 roller flat belt idlers

### STEPHENS-ADAMSON CONVEYING

www.Stephens-Adamson.com

CANADA  
Telephone: 1-800-510-3802  
Fax: 1-613-967-8128

U.S.A.  
Telephone: 1-800-638-6788  
Fax: 1-800-866-1438

INTERNATIONAL  
Telephone: 1-613-962-3411  
Fax: 1-613-967-8128

DS-E-IDL-00-115 A