

'Dimensions in Inches'

Belt Width	Roller Assembly Part Number	R711-6327 Live Shaft Idler Dimensions 7-1/2" dia. Rolls			Assembly Weight
		A	C	G	
36"	M-18483-137-01	45	50	38-1/4	213 lbs.
42"	M-18483-137-02	51	56	44-1/4	241 lbs.
48"	M-18483-137-03	57	62	50-1/4	265 lbs.
54"	M-18483-137-04	63	68	56-1/4	291 lbs.
60"	M-18483-137-05	69	74	62-1/4	316 lbs.
72"	M-18483-137-06	81	86	74-1/4	370 lbs.
84"	M-18483-137-07	93	98	86-1/4	405 lbs.
96"	M-18483-137-08	105	110	98-1/4	427 lbs.

Note: BEARINGS ARE PRICED AND SOLD SEPARATELY.

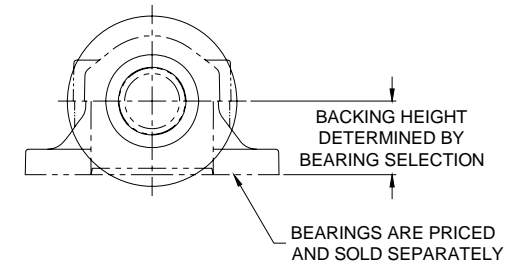
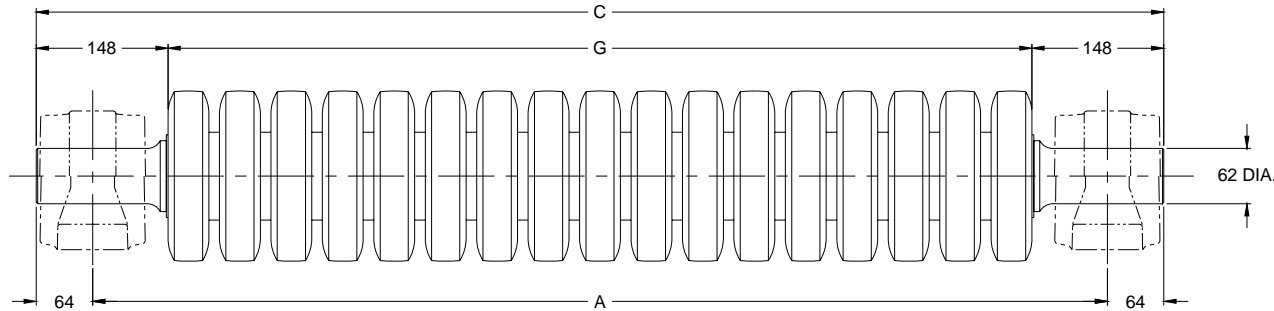


STEPHENS-ADAMSON CONVEYOR COMPONENTS
www.Stephens-Adamson.com

CANADA
Telephone: 1-800-510-3802
Fax: 1-613-967-8128

U.S.A.
Telephone: 1-800-638-6788
Fax: 1-800-866-1438

INTERNATIONAL
Telephone: 1-613-962-3411
Fax: 1-613-967-8128



'Dimensions in Millimeters'

Belt Width	Roller Assembly Part Number	R711-6327 Live Shaft Idler Dimensions 191 mm dia. Rolls			Assembly Weight
		A	C	G	
914 mm	M-18483-137-01	1143	1270	972	97 kg.
1067 mm	M-18483-137-02	1295	1422	1124	109 kg.
1219 mm	M-18483-137-03	1448	1575	1276	120 kg.
1372 mm	M-18483-137-04	1600	1727	1429	132 kg.
1524 mm	M-18483-137-05	1753	1880	1581	143 kg.
1829 mm	M-18483-137-06	2057	2184	1886	168 kg.
2134 mm	M-18483-137-07	2362	2489	2191	184 kg.
2438 mm	M-18483-137-08	2667	2794	2496	194 kg.

Note: BEARINGS ARE PRICED AND SOLD SEPARATELY.



STEPHENS-ADAMSON CONVEYOR COMPONENTS
www.Stephens-Adamson.com

CANADA
Telephone: 1-800-510-3802
Fax: 1-613-967-8128

U.S.A.
Telephone: 1-800-638-6788
Fax: 1-800-866-1438

INTERNATIONAL
Telephone: 1-613-962-3411
Fax: 1-613-967-8128

DS-E-IDL-00-131 A